

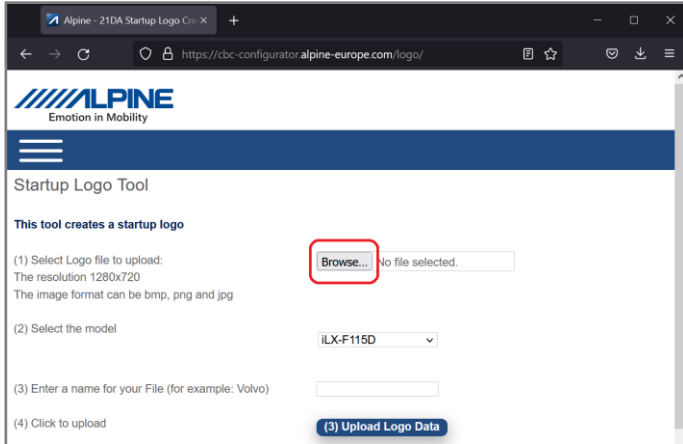
iLX-705D / iLX-F905D / iLX-F115D / i905D Series

Change Start-Up Logo procedure

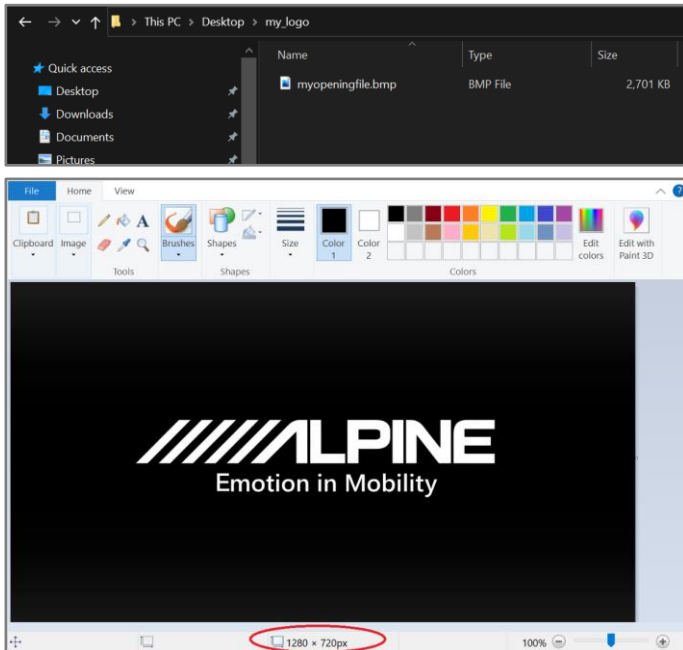


Generate the Car by Car Start-Up Logo

- 1 Open the link <https://cbc-configurator.alpine-europe.com/logo/>.
- 2 On the site click the "Browse" button

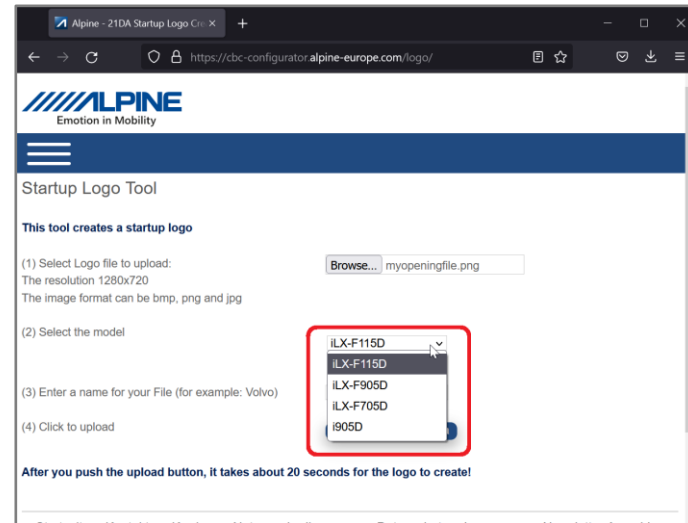


- 3 Select your logo, make sure the logo file resolution is 1280x720px.

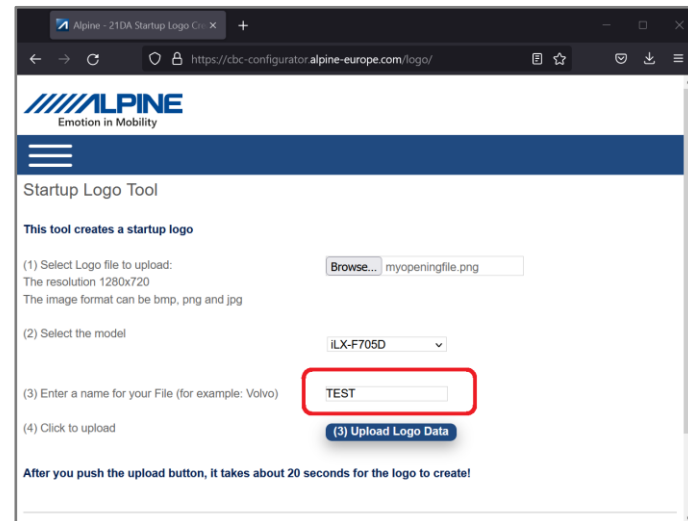


Generate the Car by Car Start-Up Logo

- 4 Select the Head Unit model.



- 5 Enter a Name for your file (for example your name or vehicle).



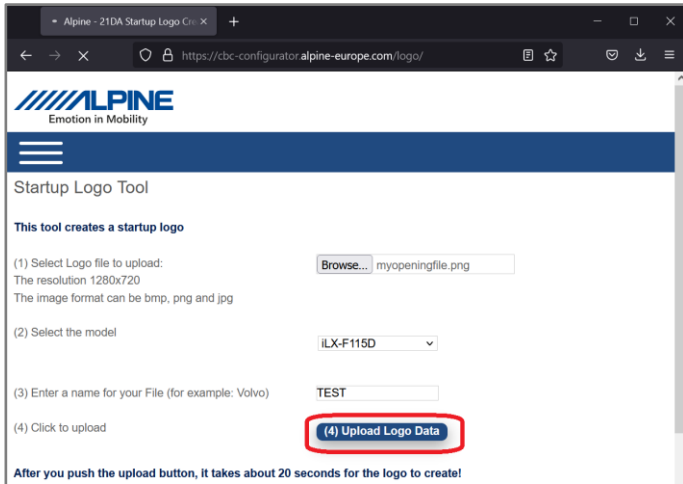
iLX-705D / iLX-F905D / iLX-F115D / i905D Series

Change Start-Up Logo procedure

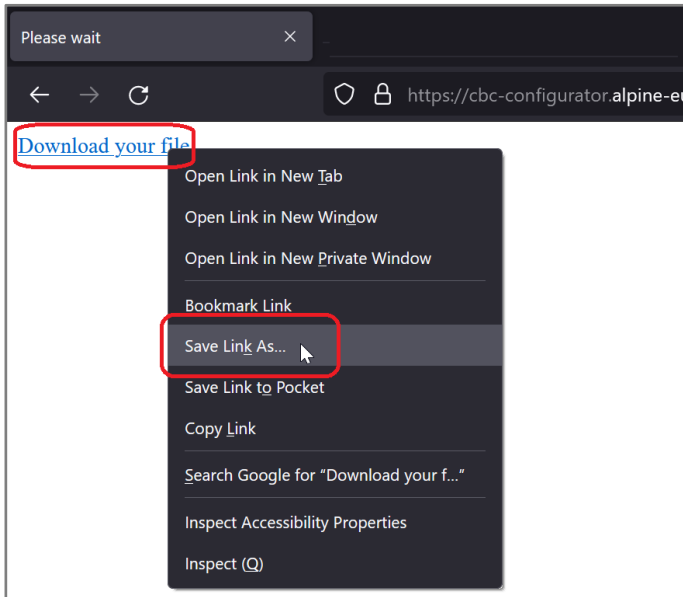


Generate the Car by Car Start-Up Logo

- 6 Push the “*Upload Logo Data*” button and wait for 30 seconds until the download link is shown.

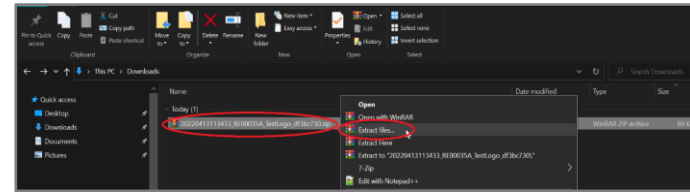


- 7 Right-Click the link and select “*Save Link As...*”. Select a location on your computer. Open the location by using the File Explorer.

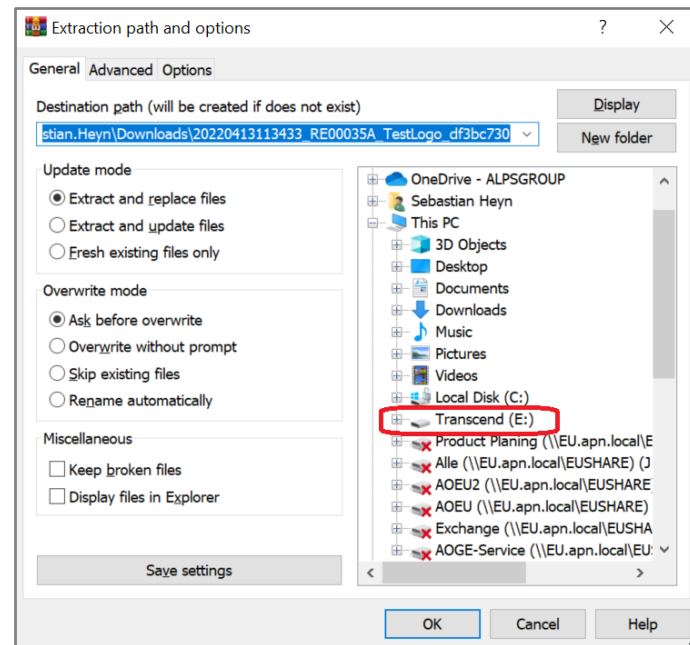


Generate the Car by Car Start-Up Logo

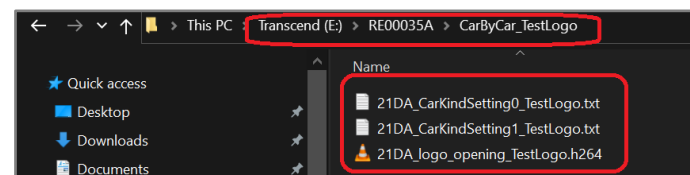
- 8 Open the file with an unpack utility, like *WinZip*, *rar* or *7z*. Right Click the file and select “*Extract Files to...*”.



- 9 Select your (empty and FAT32 formatted) USB stick and click “*OK*”.



- 10 The folder structure on the USB stick will be created. It should look similar to this:



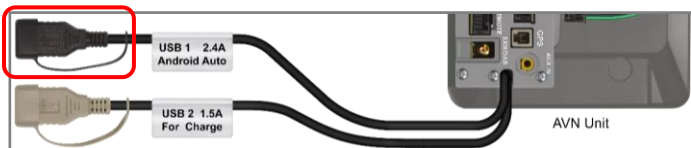
iLX-705D / iLX-F905D / iLX-F115D / i905D Series

Change Start-Up Logo procedure



Update the Car by Car Start-Up Logo

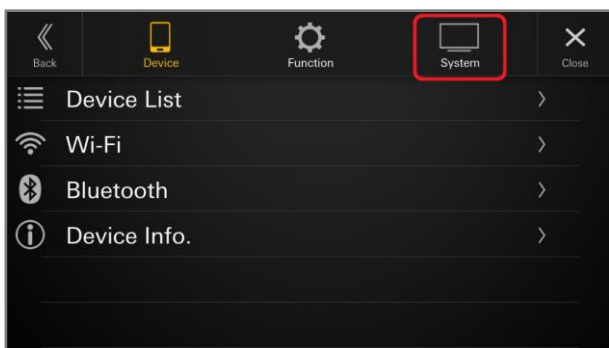
11 Connect USB stored Car by Car data with black connector.



12 Insert the USB stick into the Alpine Head Unit and open the menu. Select "Setup".

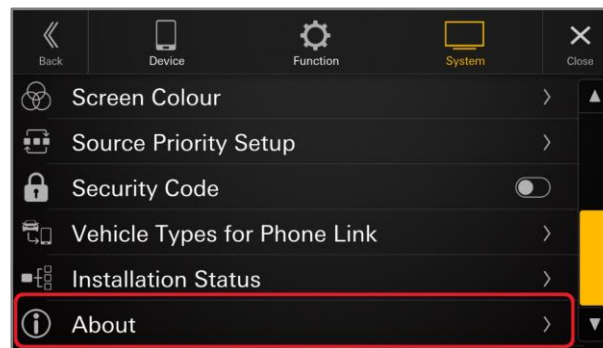


13 Select "System".



Update the Car by Car Start-Up Logo

14 Scroll down to the bottom. Select "About".



15 If you created the USB stick correctly, the Car by Car Update "Update" button will be enabled.



16 Click "OK" to confirm you want to customize the unit.

